

## CONSULTING

- *Problems with data / recording systems?*
- *Need geometry merge, help with quality control and/or corrected source & receiver positions?*

*We can provide you with a variety of solutions.*

## SOFTWARE SALES • LEASING • TRANSCRIPTION

### QualSeis™

- *2D/3D Seismic Data Analysis, Field Processing & Geometry, Reformat node to shot domain, QC, output SegD, SegY or as input*
- *Field Applications: Land, OBC and Node Acquisition Systems -- Real time monitoring / reformatting of output from node or real time systems*
- *Processing : All the above plus a complete suite of additional modules ( eg. decon, noise reduction, frequency enhancement, resampling, trace math, 3D orientation rotation, + much more ! )*
- *Platform: Linux or Windows ( 32 or 64 bit )*

### Beltway\_Transcribe

- *High Performance Tape Transcription Software*

### Beltway\_21

- *Transcription Software Module Specifically Designed for 21 Track Tapes*

**Unique Custom Software and Hardware Solutions are Always Available to Meet Your Requirements**



4600 Hwy 6 North, Suite 200  
Houston, Texas 77084  
281-829-0505 ph  
281-769-2349 fax  
[www.beltwayseismic.com](http://www.beltwayseismic.com)

# BELTWAY Seismic Inc.



*Geophysical Quality Control  
Reformatting  
Transcription*

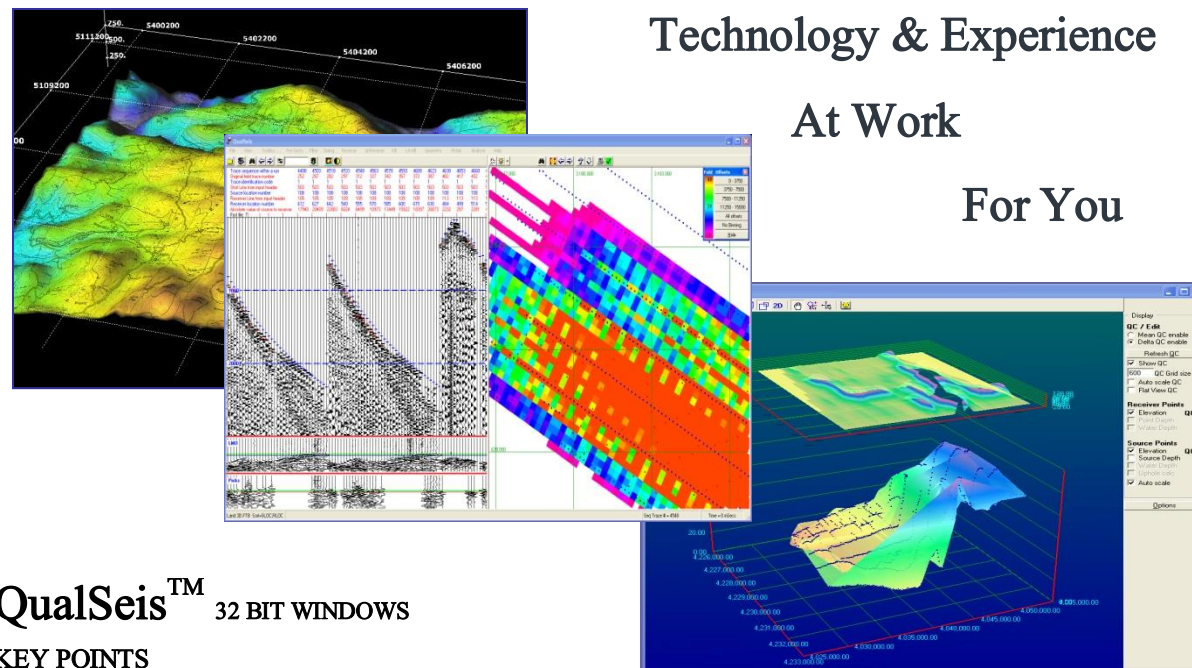
# QualSeis™

## SEISMIC DATA REFORMATTING & QUALITY ASSURANCE

QualSeis™ is a trademark of Beltway Seismic, Inc. and is our featured 2D / 3D Seismic Data Analysis & Geometry QC System, the solution that delivers accurate post acquisition positioning in the field or in processing.

QualSeis™ enables the user to handle multiple tasks before, during and after data acquisition. Just to hit on a few key features, QualSeis™ handles: Automatic analysis and QC of shot or receiver positions or do it manually via the interactive map / trace relationship; Interactive vertical axis QC and corrections; Geodetic transformations and conversions (e.g., apply GPS vib positions to data in local grid); Build brute stacks – on 3D surveys select arbitrary lines to stack; as well as trace edits, kills, reverse, filter, scale and first break picks. Trace and geometry work can be done in SegY or SegD and output in either format.

QualSeis™ can import navigation files from alternate systems and display them as overlays on the map, paving the way for merging geometry from input to trace headers or outputting it in SPS datasets. QualSeis™ is the answer to XYZ orientation on 3 component sensors, remapping SegY header word positions to Client specs on output and outputting SegD shots from receiver gather inputs. Among many key features, remapping of SegD header words to SegY header positions on input is just one of many valuable tools packaged within QualSeis™.



Technology & Experience  
At Work  
For You

## QualSeis™ 32 BIT WINDOWS

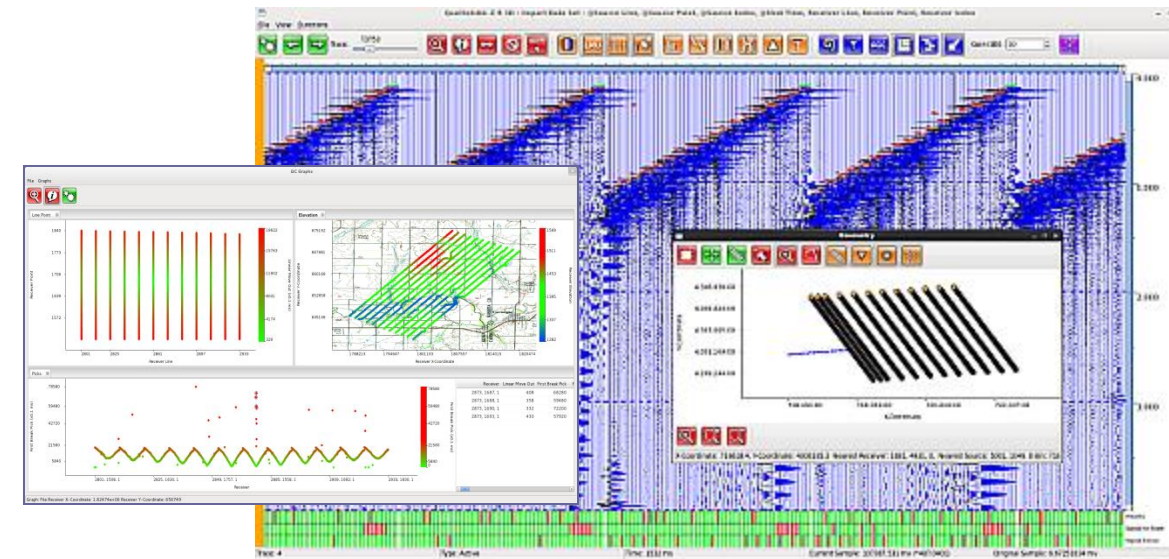
### KEY POINTS

- Edit / QC** data in SegD, SegY & variations such as AutoSeis, Fairfield 'Z' from tape, disk, or network storage.
- Examine Data** using screen display & check for quality and obvious gross problems.
- Automatic** first break picks on input, or on demand with Picker QC.
- QC/Analysis & Verify Positioning** automatically or manually check shot or receiver positions via the interactive map utilizing our revolutionary "Live LMO" feature.
- Verify Coverage** by computing binning statistics and display coverage plots.
- Interactive Vertical Axis QC and Correction** utilizing graphical 3D surface displays for elevation and uphole times, etc. Overlay maps as Geotiff, jpeg, DXF files.
- Interactive display** - map to traces & traces to map - with zoom, amplitude and phase spectra, signal to noise analysis, compare records, sample tracker.
- Geodetic Transformations and Conversions** (e.g. apply GPS vib positions to data in local grid).
- Build Brute Stacks** - select arbitrary lines to stack.
- Vibroseis Tools** including correlation, vertical stack. Map Vibroseis attributes such as drive level, phase, distortion, force, viscosity and stiffness from field system outputs.

## QualSeis™

### 64 BIT WINDOWS OR LINUX

QualSeis™ 64 bit is cross platform, acquisition or processing system quality control and reformatting software that offers real time network attached storage device (NAS) read after write solutions as well as all the functionality of the venerable 32 bit version. Read after Write is also available on Node based systems by way of monitoring a selected network location for new data as it is transcribed from the system.



### KEY POINTS

Detection of dead, noisy, and reversed polarity traces; Signal to noise QC; Live QC database export; View statistics in near real time; Visual QC (scatter plot and bar graph for trace, receiver and source attributes); Analyze traces in time and frequency domain; Accurately analyze large channel count spreads; SegD, SegY plus AutoSeis SegY and FairfieldNodal Z inputs; and the ability to read in data post process for tape verification.

## Beltway\_Transcribe & Beltway\_21

### TRANSCRIPTION SYSTEMS & SERVICES

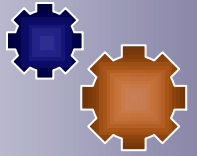
Beltway\_Transcribe and Beltway\_21 are both Windows-based, high performance tape transcription systems. Both systems are presently utilized by tape transcription companies around the world. These software packages are efficient and user friendly. Beltway\_21 Track Tape Transcription Software is custom designed for our new generation, desktop 21 Track Drives.

Formats: SegA, SegB, SegC, SegD, SegY, DISCO, Globe 4000, PELCO, Petty-Ray TEMPUS, Progress-2, Progress-4, SDS-1010, Sercel 328, Summit-1, W Code 2, W Code 4, EBCDIC or ASCII, Bit to Bit, User Defined Trace Sequential, Various Major Oil Company's Internal Formats ♦ 21 Track Formats: Leach Binary Gain 24 Channel, Texas Instruments DFS III, DFS IV, TI 9,000 / 10,000, TIAC, Sercel Binary & Variable Gain Dual Scan Systems.

In-house seismic tape transcription services are available including unique geometry applications.

### SOFTWARE SUPPORT & MAINTENANCE

Support and maintenance packages come with all of our software products. Receive priority technical support, software upgrades and maintenance releases. The first year of support and maintenance comes with each license and invoiced annually thereafter.



### CUSTOM SOLUTIONS

Custom software and/or hardware solutions to suit your geophysical needs.



### LEASE SOLUTIONS

Short term lease packages are available, built to suit your specific project needs.



### FTP SOLUTIONS

We can lend a hand while your crew is in the field via our secure ftp site. Quality control and geometry correction services are provided inhouse. Daily reports sent to the field or main office ensuring a quality product.